

# Reliable Greens

“Where Serenity Meets Nature”

A Project by



PROJECT NAME: **RELIABLE GREENS**  
MAHARERA NO: **P52100053278**  
SITE ADDRESS: **37/1/3, LONAVALA (M CL), MAWAL, PUNE,**  
**MAHARASHTRA – 410401**





# Lonavala

## From City Stress to Hilltop Rest

"**Lonavala**, a beloved hill station known for its lush greenery, serene valleys, waterfalls, and a cool, pleasant climate year-round. Just a short drive from Mumbai and Pune, it's the perfect escape from the city hustle.

It's a perfect blend of nature and modern living ideal for **holiday homes, weekend rentals, or long-term investment**.

Whether you're looking for a peaceful retreat or a high-return property, Lonavala combines nature, luxury, convenience, Low pollution and quiet surroundings ideal for relaxation resulting in High tourist footfall **boosting rental potential** for holiday homes and resorts, —**perfect for retirement** or remote work.





## About Reliable Greens

**“Come Home to the Life You Always Dreamed Of”**

In the hills of Lonavala, a premium gated community of **26 thoughtfully designed row houses** Reliable Greens offers you the luxury of peace, purpose and place you truly belong to.

Each home is crafted to offer scenic views, open spaces and a secured lifestyle. With seamless connectivity to both Mumbai and Pune, **"you are always close to the city yet Far from the chaos"**.

Its a Lifestyle investment in Wellness, tranquility and timeless Charm



A perfect home for your weekend retreats,  
family gatherings, or a peaceful retirement.

- Closed gated society with 24x7 security
- Modern design row houses amidst nature
- Private gardens and terraces
- Internal roads & landscaped greens



Artistic representation



Artistic representation

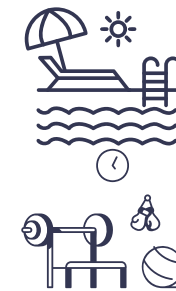


Artistic representation



# Amenities

Luxury Living Amidst Nature's Grandeur



Swimming Pool



Outdoor garden gym



Clubhouse with indoor games



Children's play area

Artistic representation



Artistic representation



# Amenities



24x7 Security with CCTV surveillance



Internal concrete roads



Private garden for each Row House



Ample Parking Space

Artistic representation







Artistic representation

Experience a balanced life, where luxury meets peace.



Artistic representation





# 1st Floor

Artistic representation

## 1st Floor

Living, Kitchen &  
common bathroom



Artistic representation



Artistic representation

2nd Floor



2nd Floor  
2 Master Bedroom

Artistic representation



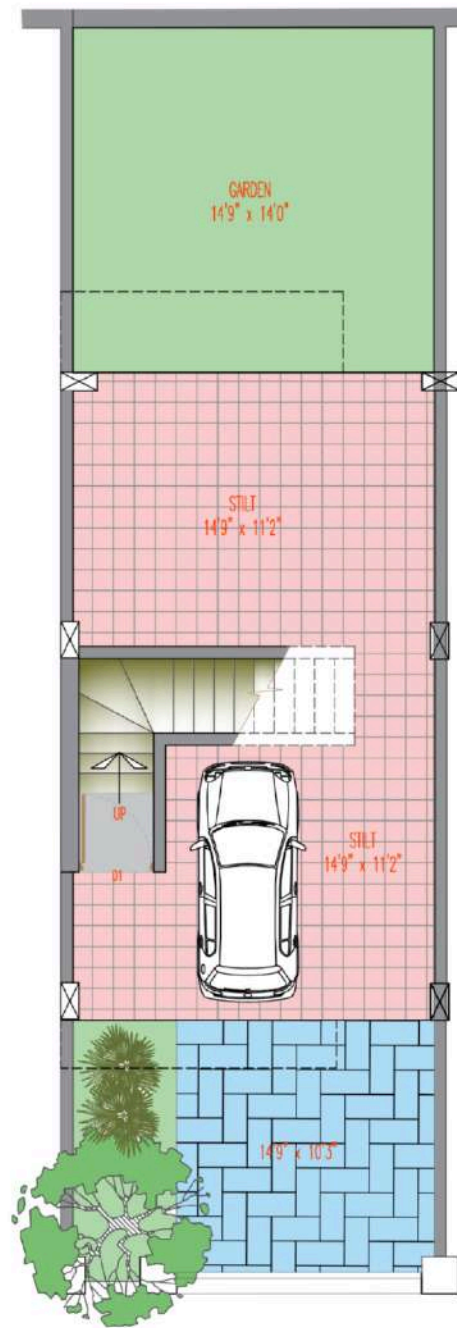


# Landscaping Model

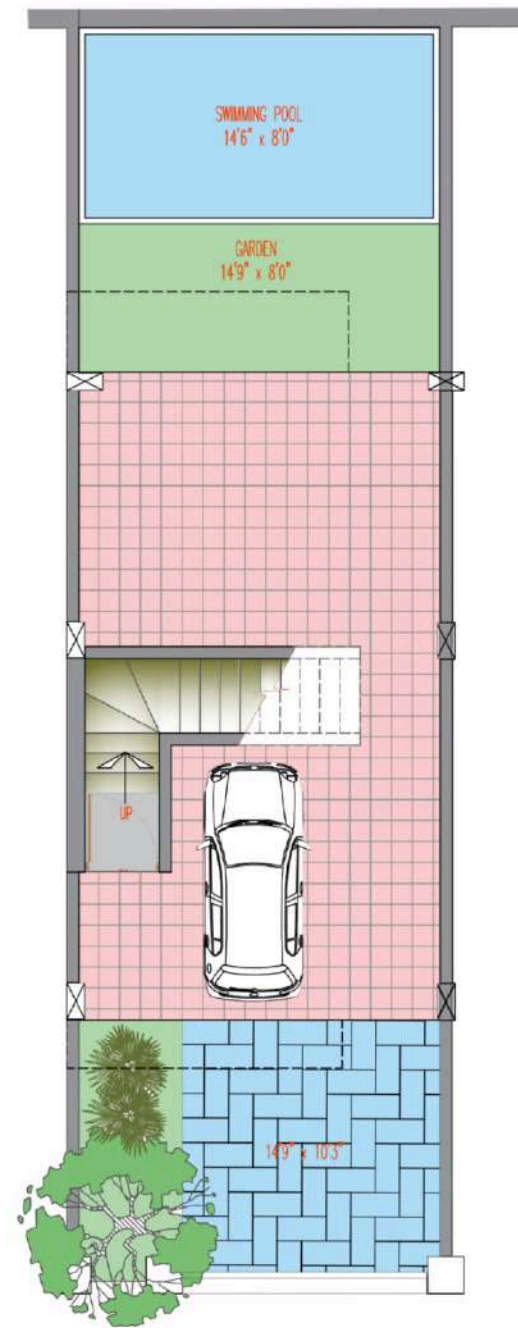




# A Wing & C Wing



Stilt Floor Plan



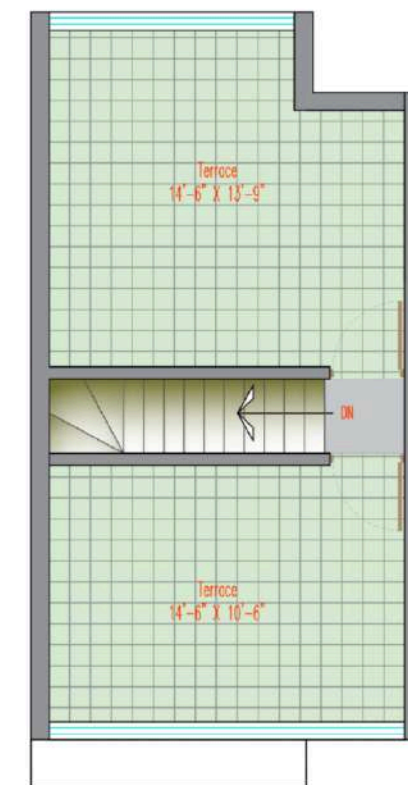
Stilt Floor Plan (With Pool)  
(optional)



Stilt Above First Floor Plan



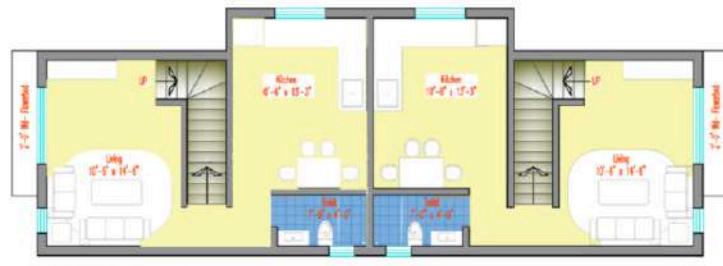
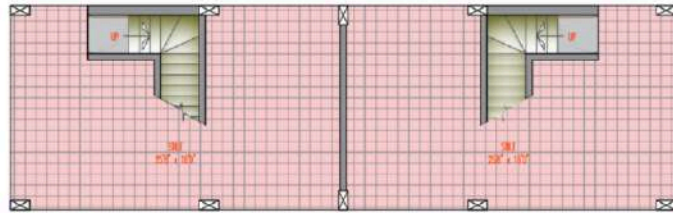
Second Floor Plan



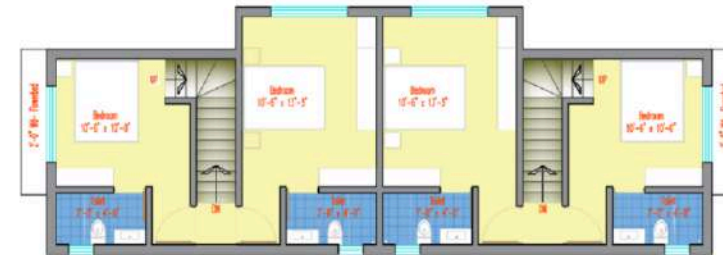
Terrace Floor Plan



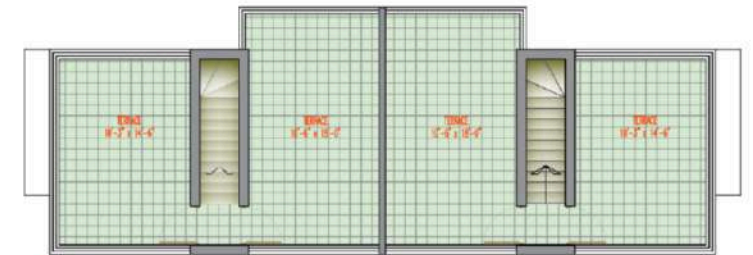
# B Wing



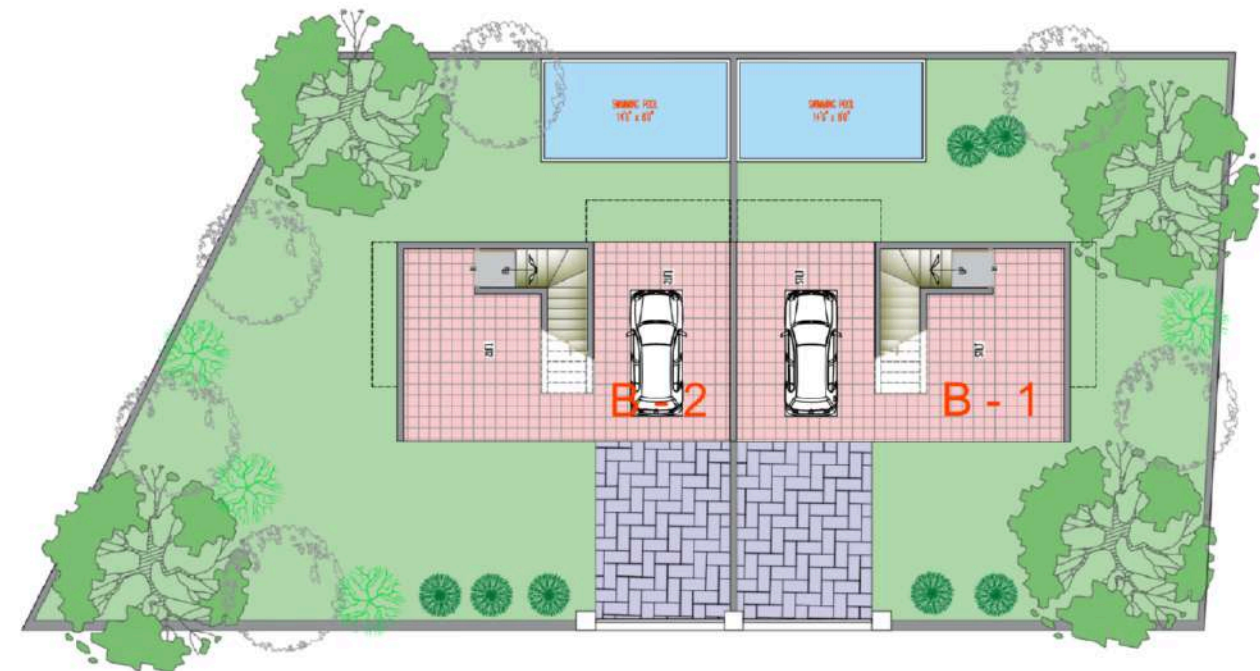
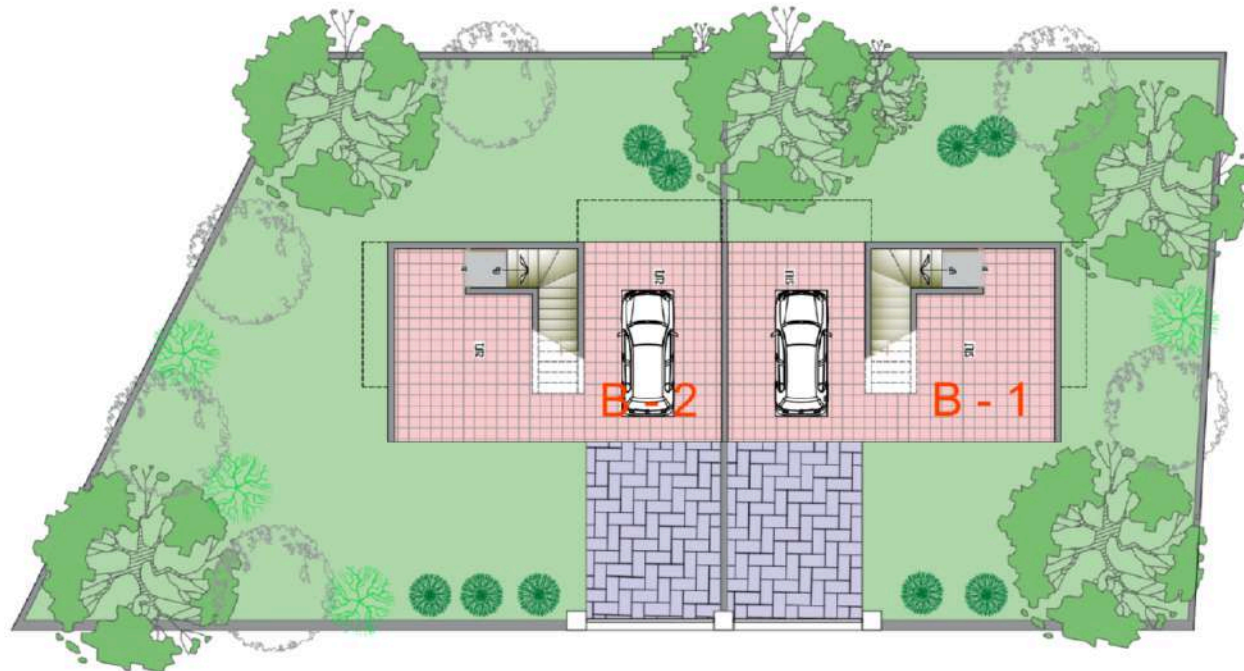
Stilt Above First Floor Plan



Second Floor Plan



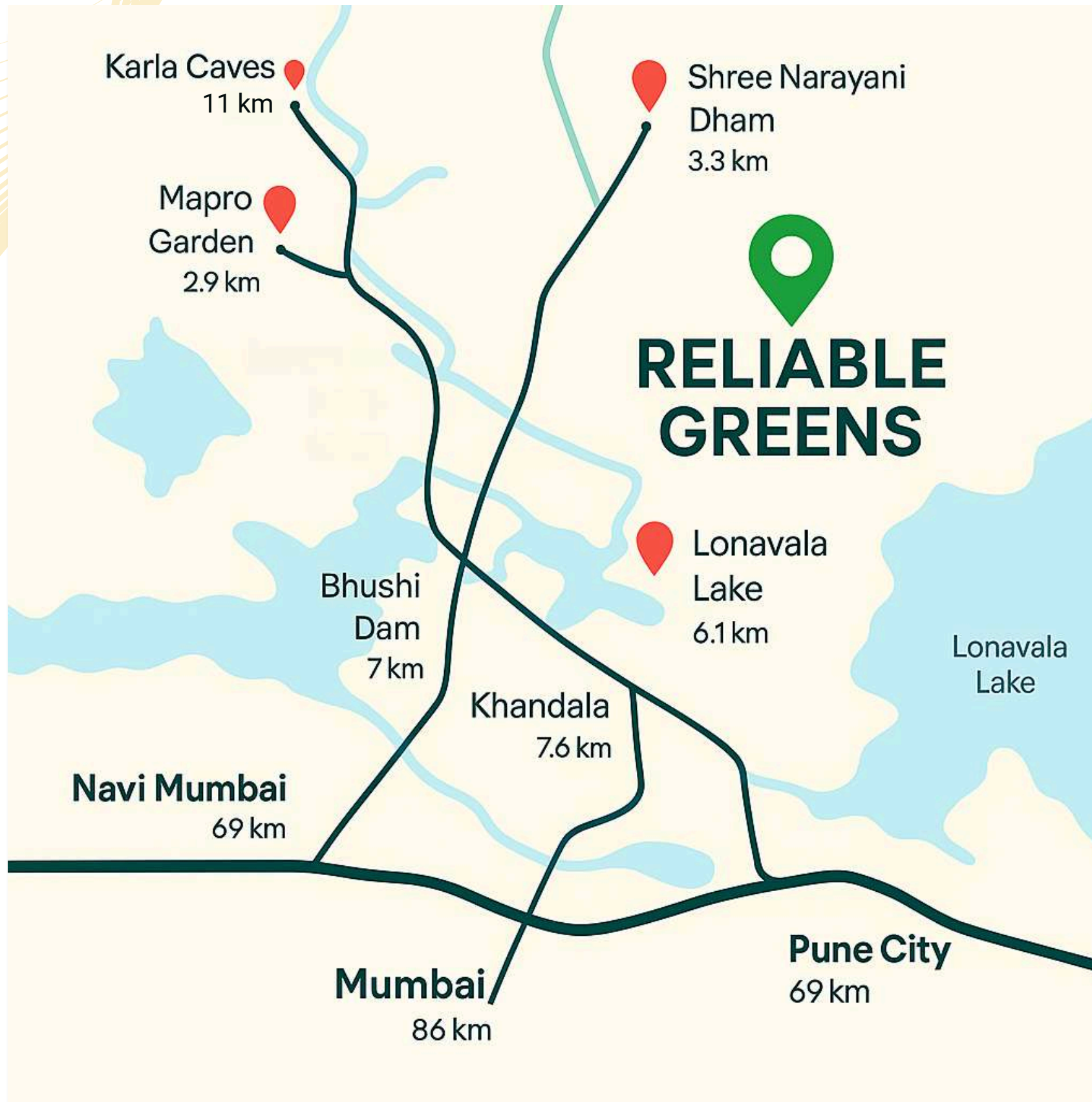
Terrace Floor Plan



Stilt Floor Plan (With Pool)



# Close to the City. Closer to Nature.



90 mins from Mumbai

70 mins from Pune

Easy access via Expressway

Near Bhushi Dam, Tiger Point,  
and key attractions





**MahaRERA Registration No: P52100053278**

**Site Address: 37/1/3, Lonavala (M Cl), Mawal, Pune, Maharashtra – 410401**

**Contact: 9136536845/9136245925**

Email id: **info@reliablelifestyle.in**

Website: **www.reliablelifestyle.in**



# Reliable Greens

“Where Serenity Meets Nature”